

LAUGARDALSVÖLLUR

Hybrid völlum

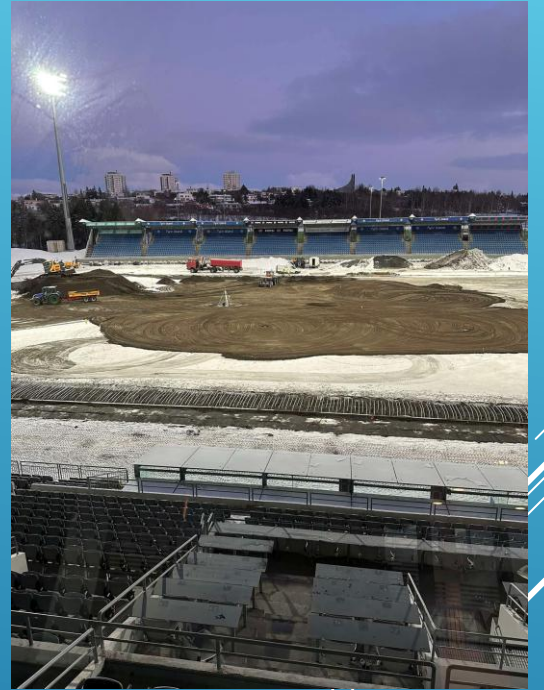
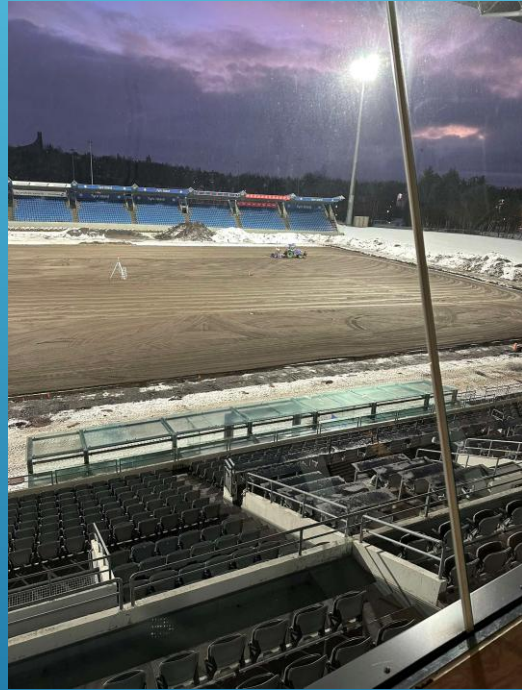
Hannes Frímann Sigurðsson

Verkefnastjóri

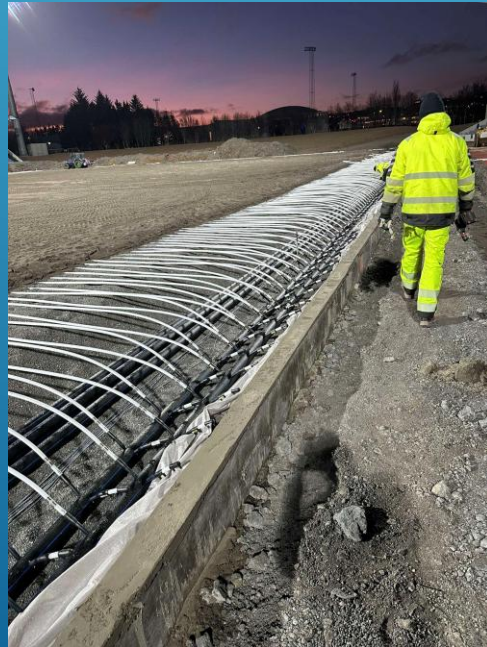
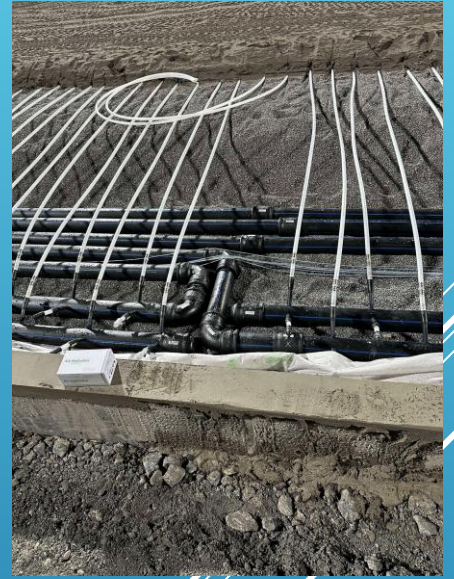
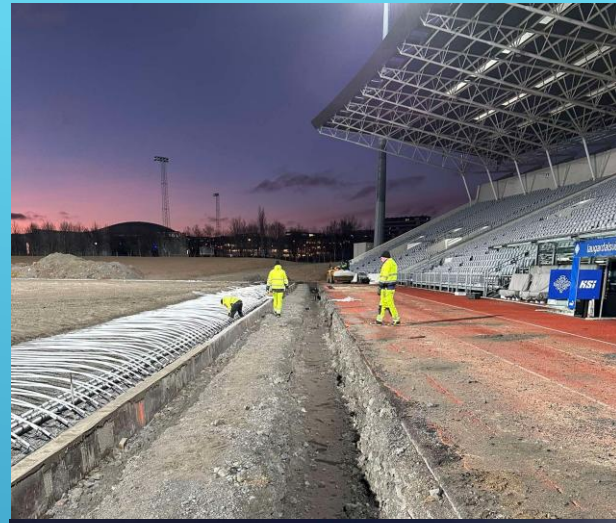


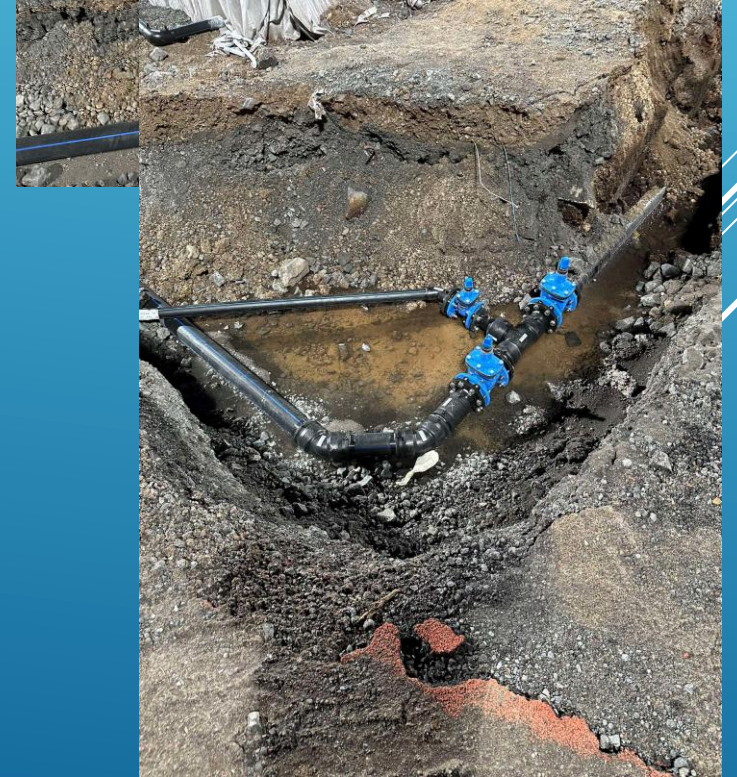






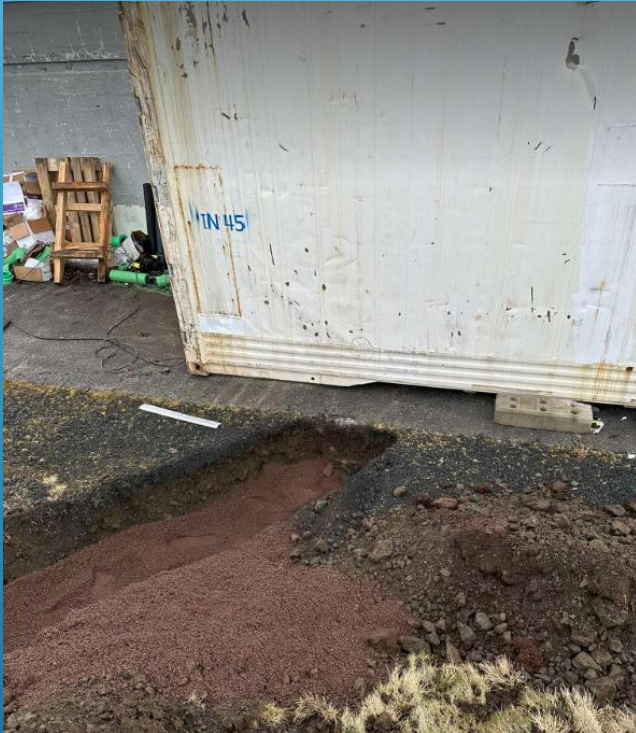


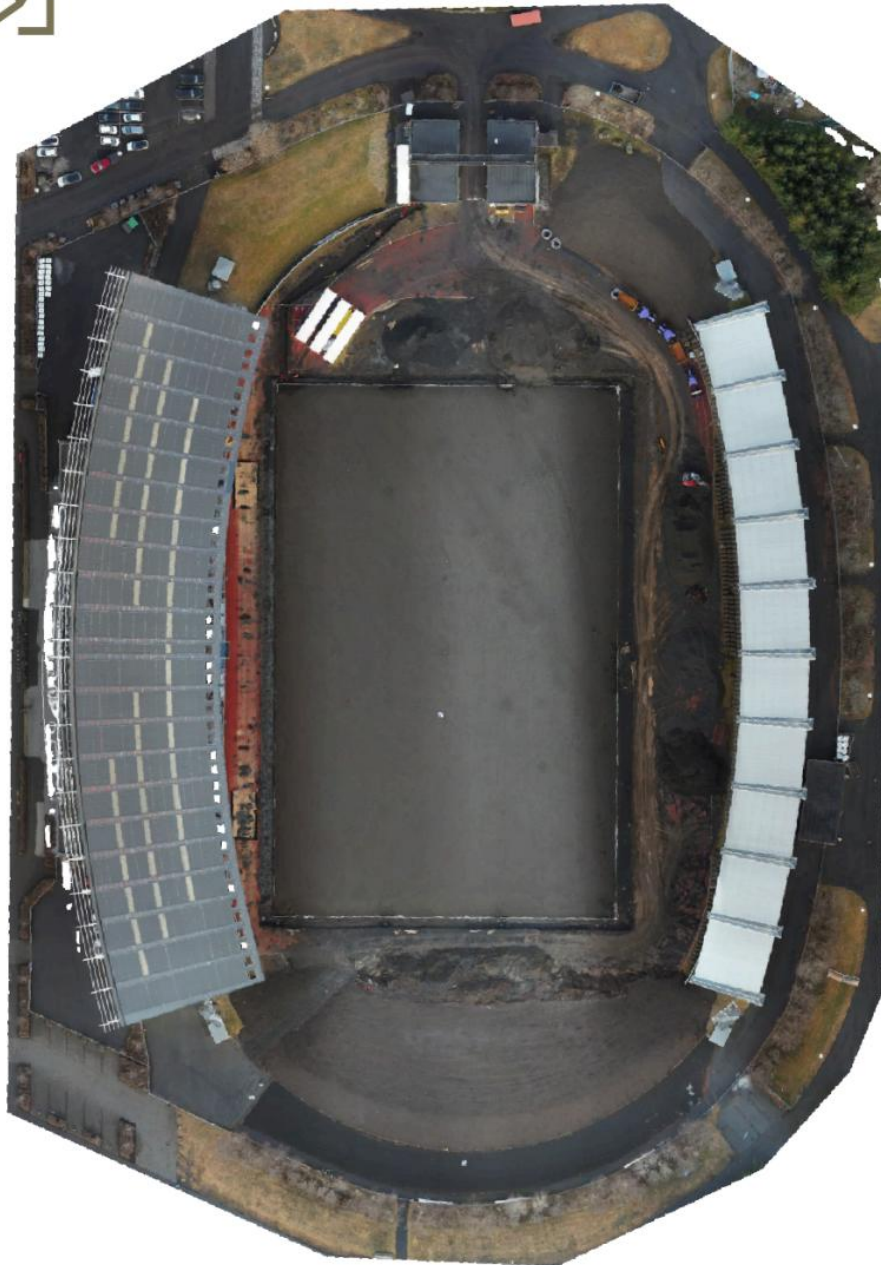




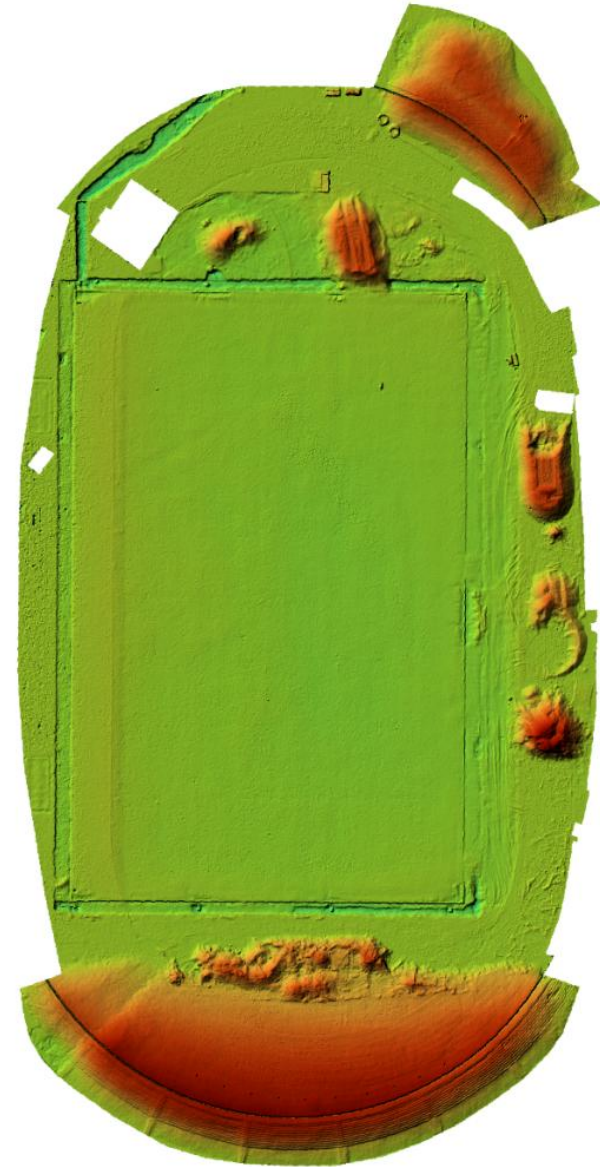


Hitastýrikerfi í gám á lóð (fer svo undir stúku)

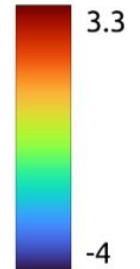




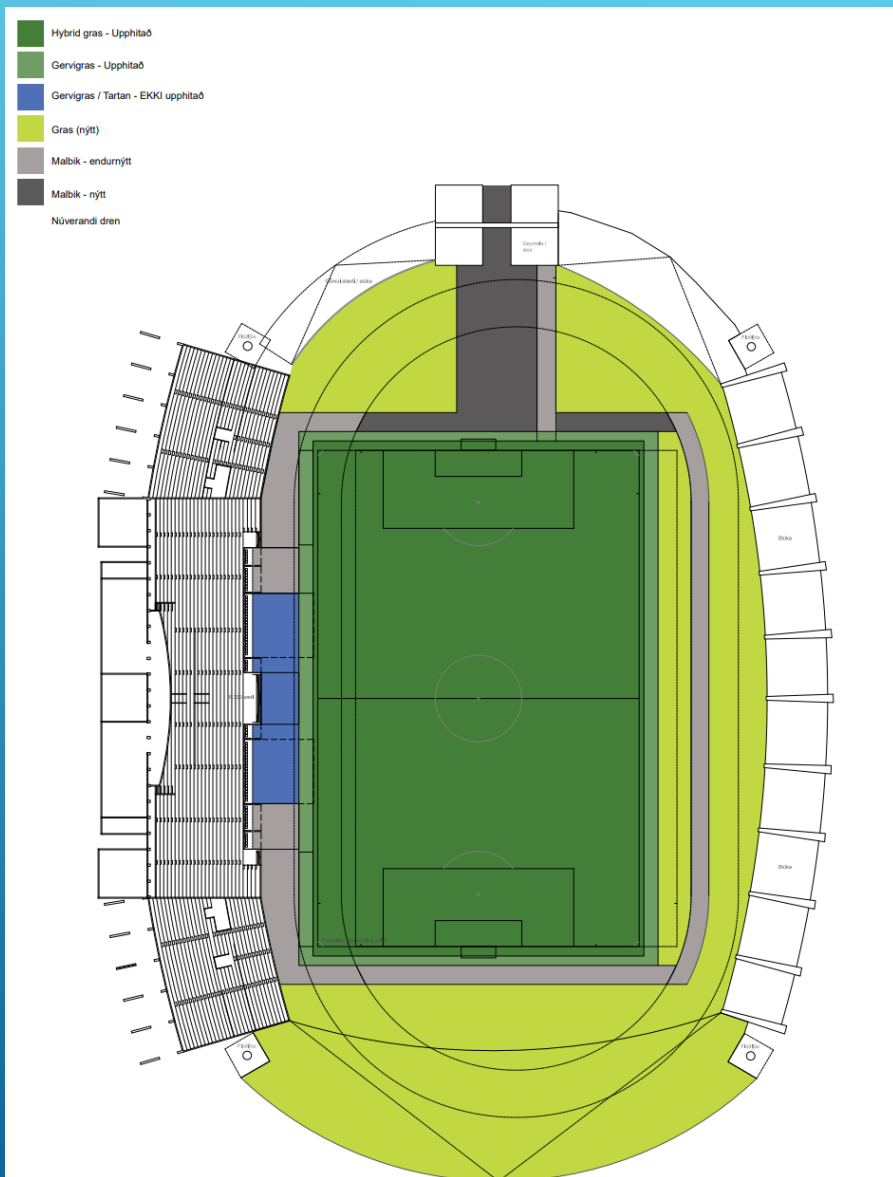
Added volume: (+) 5,748.682 cubic meter
Removed volume: (-) 2,220.427 cubic meter



Height_diff_(m)



Frágangur eftir breytingu núna og kostnaður



Kostnaðaráætlun

502.009.280 kr

Þegar ráðstafað í verk

338.000.000 kr

67%

Undirbúningur, hönnun og ráðgjöf

Leyfi og heimtaugar

Framkvæmdir

Flutningar

Samningur SIS

Hitakerfi

Vökvunarkerfi

Fráveitukerfi

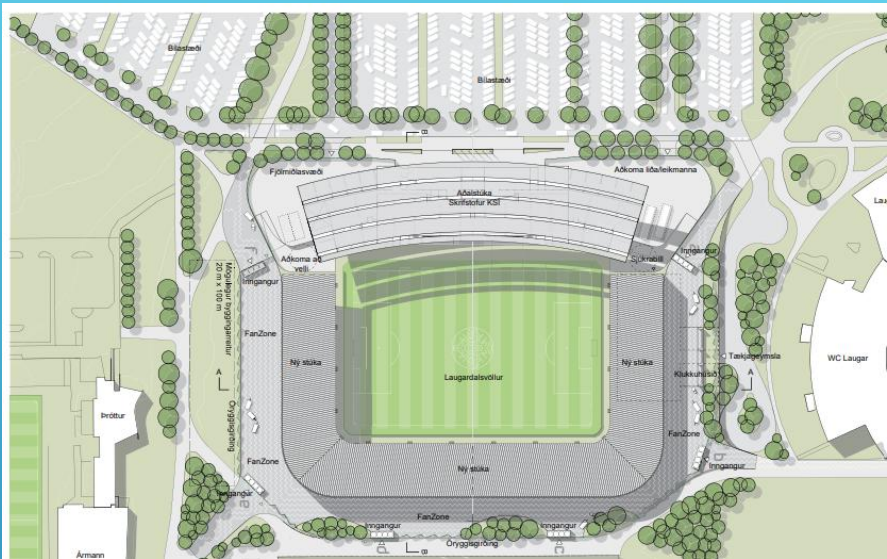
Fyllingar og jöfnun

Tæki og áhöld

Gerfigras og frágangur

Efni og undirlag

Tilgátumyndir af nýrri stúku



PLAN
STUDIO

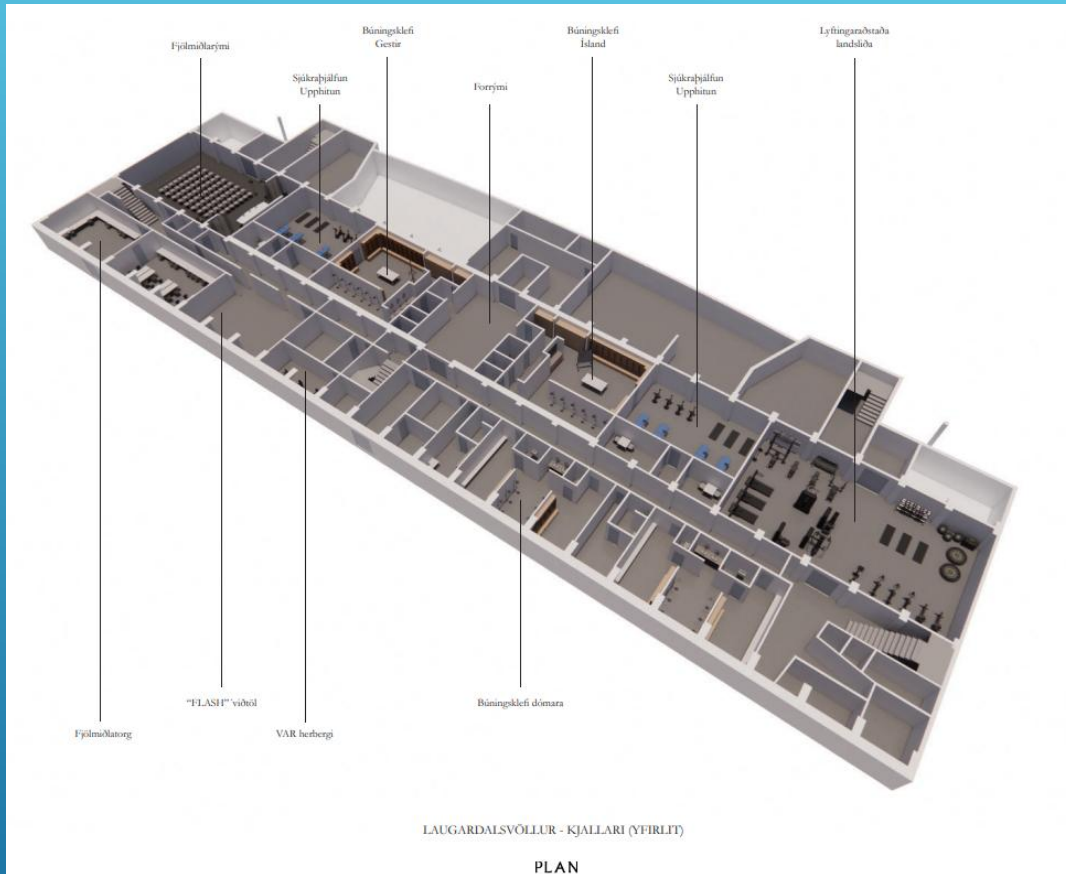
stadumconcept

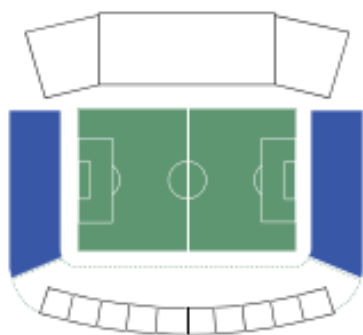
sbp

exa nordic



Unnið að hugmyndum að breytingu innanhúss og bættri lýsingu vallar





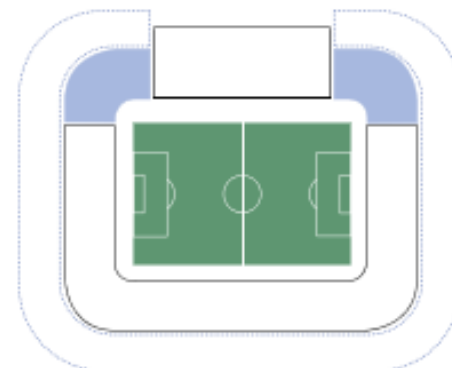
ÁFANGI 1

Fyrsti áfangi nýrrar stúku er á suður og norðurenda vallarins. Núverandi austurstúka er í notkun á meðan framkvæmdum stendur.



ÁFANGI 2

Annar áfangi nýrra stúku, sem tengir norður- og suðurstúku að austanverðu, myndar eina nýja heild.



FRAMTÍÐ

Tilagan gefur möguleika á því að stækka Laugardalvöll til framtíðar. Möguleiki er að skeyta nýrri stúku við núverandi aðalstúku með "nýjum" hornum. Einnig er mögulegt að byggja við nýja stúku og auka verulega sætafjölda til framtíðar.

ÁFANGASKIPTING

PLAN
STUDIO

stadlumconcept

sbp
LAWSON
Sustainable partner

exa nordic